

MAY 2007

# SCINTIGRAPHY AT THE BARN EQUINE SURGERY

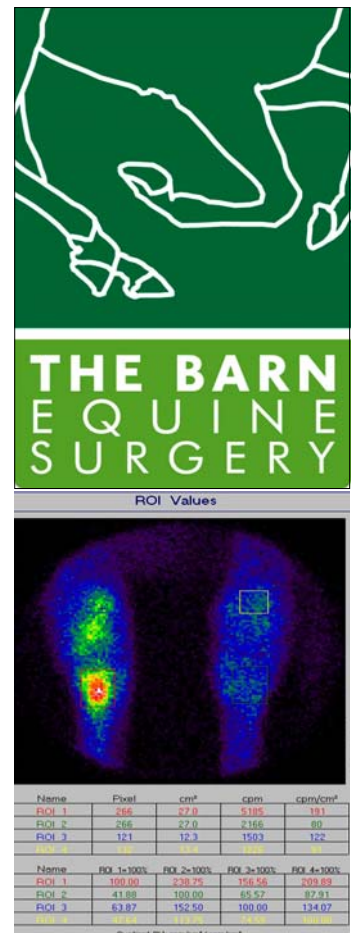
## First UK Mobile Gamma Camera Installation

We have installed the Equine Scanner Scintron from Medical Imaging Electronics in January 2006 and so far carried out over 40 scans. This is a brand new gamma camera system that is completely mobile enabling us to acquire better images much faster. It also has revolutionary motion correction software that allows us to carry out dynamic image acquisition. This avoids the possibility of false diagnosis caused by swaying motion during

static acquisition. Nuclear Scintigraphy has provided us with a method to accurately quantify a number of conditions seen in horses. The ability to confirm a likely diagnosis reached by other means enables a more informed decision as to what treatment is indicated. Colleagues will appreciate that scintigraphy offers an excellent diagnostic tool in cases of suspected pelvis and back problems as well as in needle shy horses.

### INDICATIONS FOR SCINTIGRAPHY

Stress fractures    Back and pelvic problems    Multi limb lameness    Localised lameness of unknown origin  
Horses with attitude!



### WHY The Barn Equine Surgery?

- Highest quality images using most modern equipment
- No waiting period
- Locally based so minimizing need for travelling
- Fully equipped diagnostic suite
- Full surgical and medical facilities
- Competitive prices

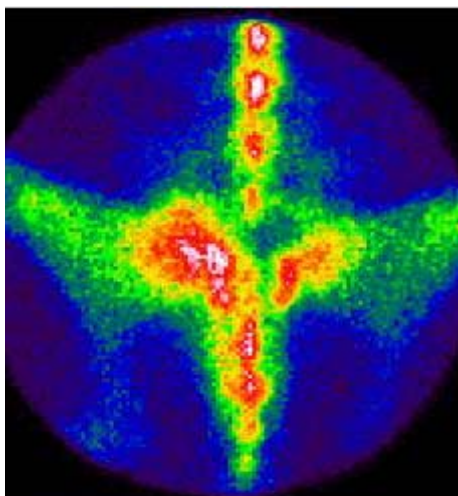


Partners; **M.L.Peaty** BVSc CertEP CertES(Orth) MRCVS  
**C.J.Pearce** BVSc CertEM(IntMed) BAEDT MRCVS  
**N.Zilic** BVetMed CertEP MRCVS

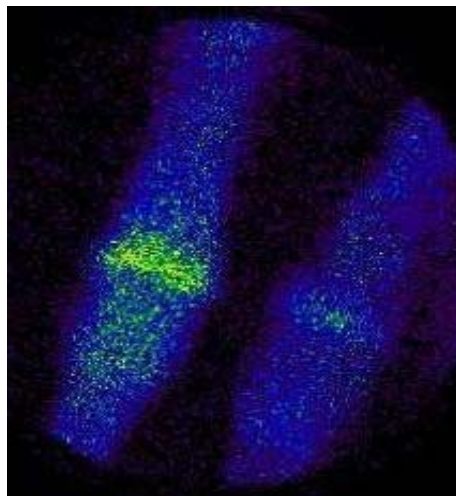
**THE BARN EQUINE SURGERY**  
RINGWOOD ROAD THREE LEGGED CROSS WIMBORNE BH21 6RE  
t. 01202 823512 | f. 01202 824960 | e. info@barnequine.co.uk  
www.barnequine.co.uk

# Recent Cases

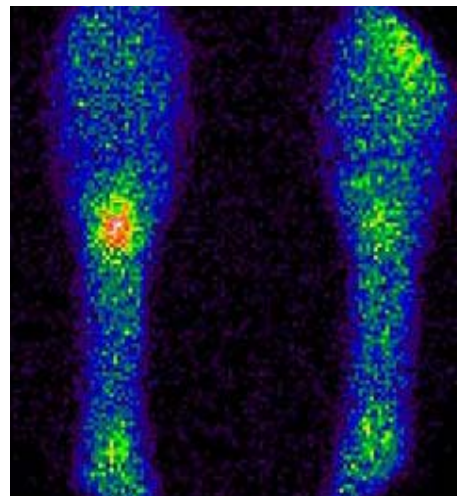
Sacroiliac Disease



Stress Fracture



Avulsion Fracture of SL Origin



## Pricing and Further Information

Our prices start from £790 which is a fully inclusive price, including VAT. For further discussion regarding referring horses for scintigraphy please contact Nenad Zilic (07909 990477), Martin Peaty (07909 990902) or the surgery on 01202 823512. Horses need to be resi-

dent at the practice for 3 days following injection of radiopharmaceutical and to arrive the day before scintigraphy is due to be carried out. This is all included in the price. We would strongly advise a good diagnostic approach prior to scintigraphy to try and isolate the

area of pain. This is not always possible but it is extremely valuable to minimize the duration of scans and radiation exposure. When scanning cases that have had diagnostic analgesia performed we would suggest a minimum of 7 days between nerve blocks and the scan.

Some cases will require further diagnostic work up following scintigraphy. Many colleagues will want to carry this out at their own practices while others may wish us to continue the diagnostic work up at the Barn. We are very happy to accommodate either preference.

**Imaging at the Barn Equine Surgery** This installation has continued the development of our imaging suite which now consists of digital ultrasound, computerized radiography and scintigraphy. This is part of a continuous investment and our commitment to excellence in comprehensive equine veterinary care

ULTRASOUND



RADIOGRAPHY



SCINTIGRAPHY

